

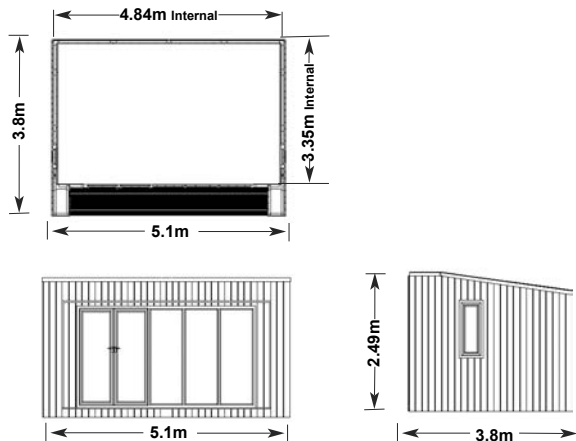
## inhus exterior specification:

- Walls:** Vertically clad western red cedar, V-joint, T&G boards.
- Wall sections:** Prefabricated individual wall construction, complete with "Celotex / Extratherm" type foiled back insulation and breathable membrane.
- Windows / Doors:** French doors, floor to ceiling to front - 2 x side windows all Rose woodUPVc, double glazed Pilkington thermal "K" glass. 8 point security locking security.
- Roof & Drainage:** EPDM Roofing solution with a 25 year backed warranty from manufacture, Brown square type PVC drain water guttering with drain pipe to suit.
- Decking:** Tantalised decking fixed with decking screws.
- Base / Floor:** Heavy tanalised timber joists, with treated 18mm ply board, 70mm celotex, 18mm treated chipboard.
- External lights:** 2 x wall mounted brush steel type lights, with 10 led decking lights (white/blue).



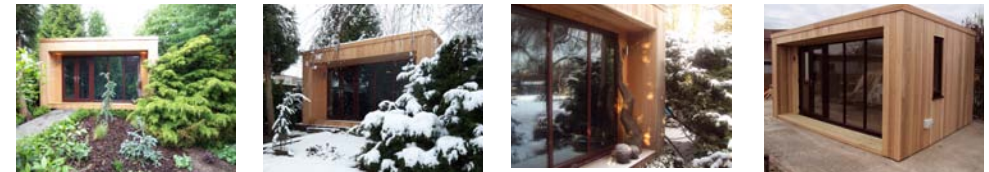
## inhus 51-38

External  
5.1m x 3.8m  
(16.8ft x 12.5ft)



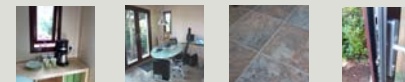
## inhus 51-38

SUMMARY	<b>External</b>	
	Size:	5.1m x 3.8m
	Height:	2490mm
	<b>Internal</b>	
	Width:	4840mm
	Depth:	3355mm
	<b>Internal Sqm:</b>	<b>16.2</b>



## inhus interior specification:

- Internal Walls:** Cream 15mm wall lining, finished with cream trim, all walls are wash down.
- Electric's:** Electric's complete with 6 Double plugs, 2 x telephone, 2 x network cables and 1 x 3 way consumer unit.
- Internal lights:** Optional - 6 recessed down lights or 3 x ceiling roses.
- Windows:** Rosewood internal window finish complete with 2 side opening windows and keyed security locking.
- Flooring:** Fitted carpet of your choice of colour or laminated flooring from our range.
- Kitchen socket:** Fitted double socket at 950mm from floor in right hand corner of inhus.
- Smoke Alarm:** Battery operated smoke alarm above front door.
- Optional extras:** Air conditioning, extra decking subject to survey, wood / aluminium doors & windows, interior wall colour change, hardwood flooring, Blue self clean glass.



£21,185